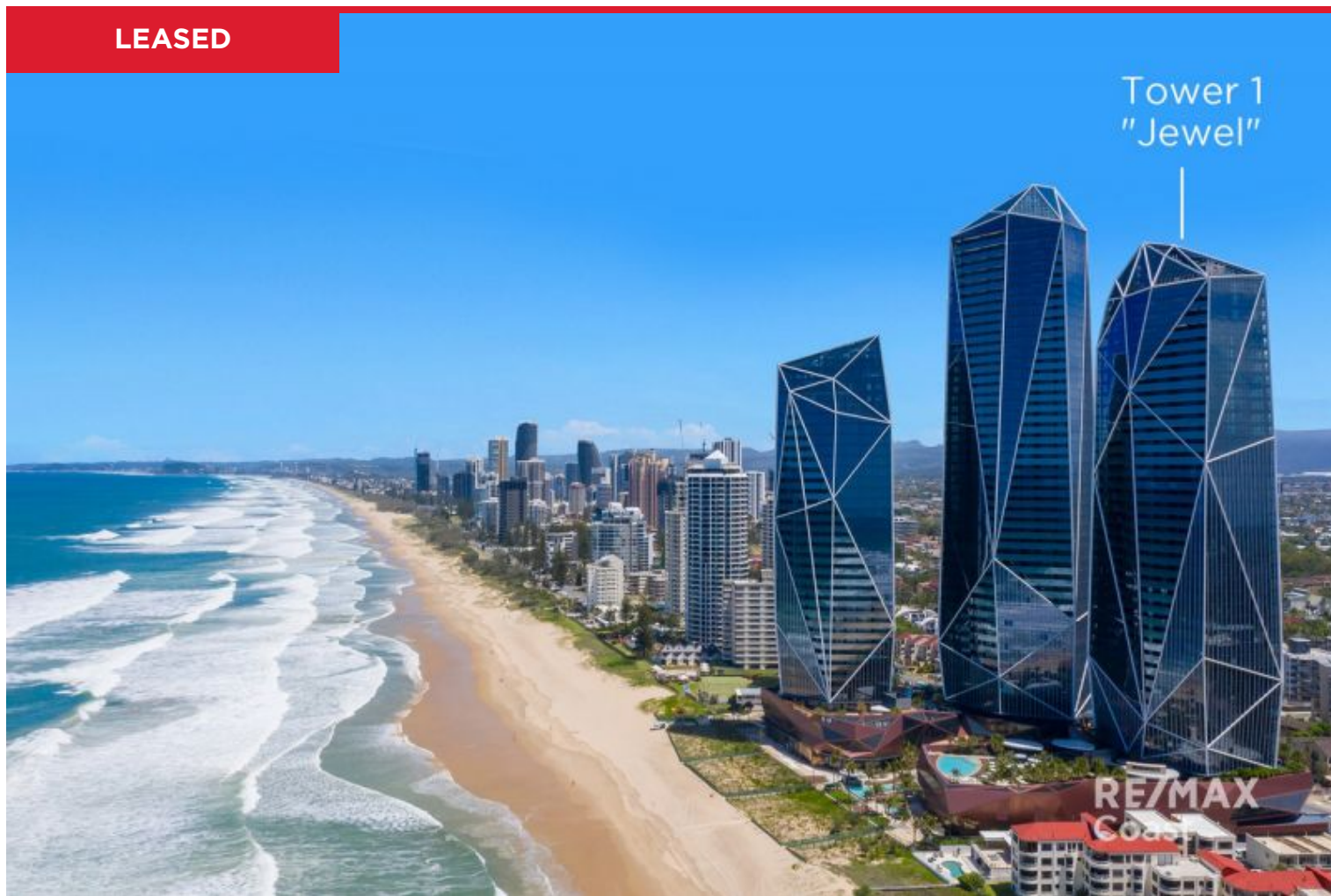
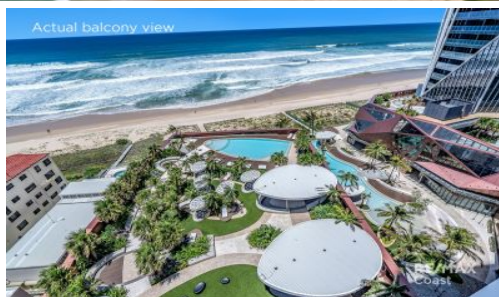


LEASED

 Tower 1
"Jewel"


11104/36-44 Old Burleigh Road, Surfers Paradise

Absolute beachfront living awaits one lucky resident who will be the first and only to enjoy the "new home feel". No expense spared, this 5-star residential apartment sets a new standard on the Gold Coast with immaculate finishes and superb facilities to make every day a holiday.

Perfectly North-East Facing with spectacular views over the beach, this huge level 11 apartment is spacious and light-filled with plenty of room on the balcony for outdoor dining.

APARTMENT FEATURES

- Ducted A/C and heating
- Washed driftwood grain floors
- Solid stone surfaces to kitchen and bathroom...

...

1 1 1

Price: \$695 per week

View: <https://remaxcoast.com.au/6298998>
RE/MAX Coast - Rentals
M 0407572235


RE/MAX Coast

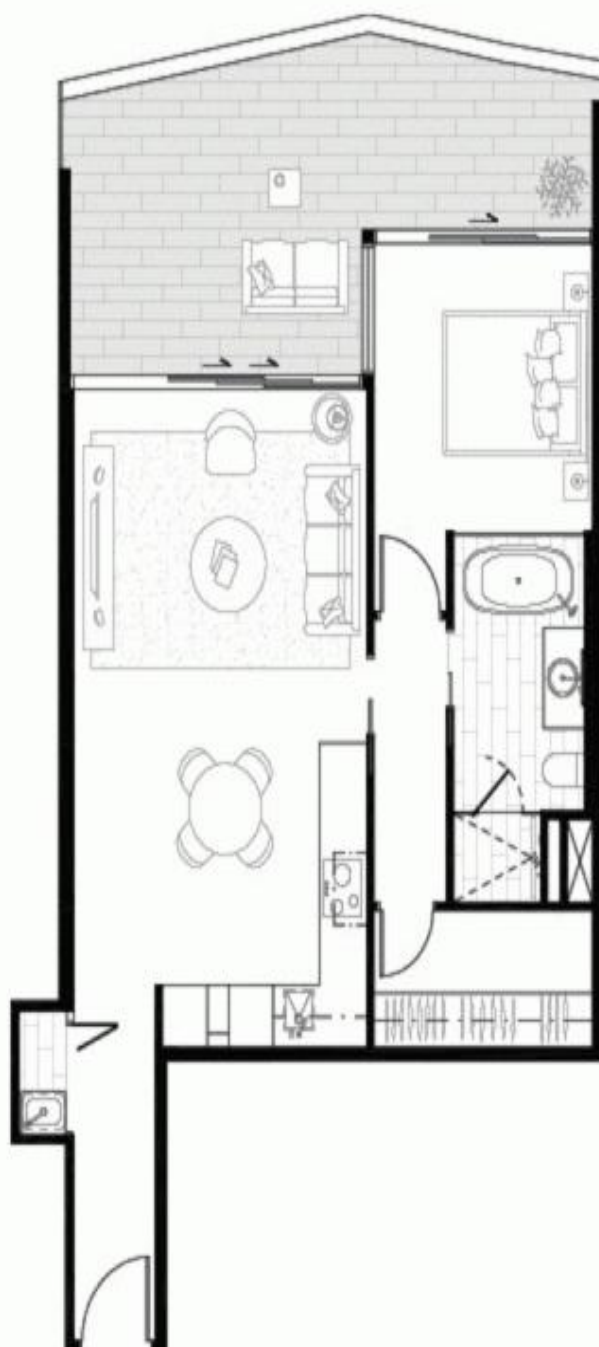


Tower One
1 Bedroom, 1 Bathroom

Total Apartment Area: 89m² - 93m²
Internal: 68m²
Balcony: 17m² - 25m²

Type E
Apartment:
4.0m, 4.0m, 5.0m, 5.0m, 5.0m, 5.0m, 7.0m, 7.0m,
8.0m, 8.0m, 9.0m, 9.0m, 10.0m, 10.0m, 11.0m, 11.0m,
12.0m, 12.0m, 13.0m, 13.0m, 14.0m, 14.0m, 15.0m, 15.0m
* internal apartment

36-44 Old Bushy Road, Seaford Paradise Qld 4207



Internal approx 68m²
Balcony approx 24m²
TOTAL = 92m²

RE/MAX
Coast