

SOLD



7/25 White Street, Southport

Located footsteps to Australia Fair, light rail & Broadwater Parklands, this unit is on the top floor of Poljane Lodge:

- 1 spacious bedroom with built-in robes
- 1 light, bright bathroom
- 1 undercover parking
- combined open plan living/dining room leading out to a mosaic balcony with treetop views
- functional, light kitchen
- tenant in place
- low body corporate (under \$40/week)
- calling investors, renovators, first home buyers

1 1 1

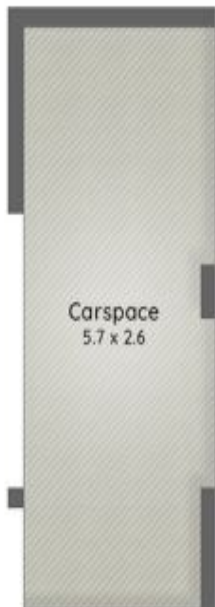
Price: \$183,000

View: <https://remaxcoast.com.au/5770188>

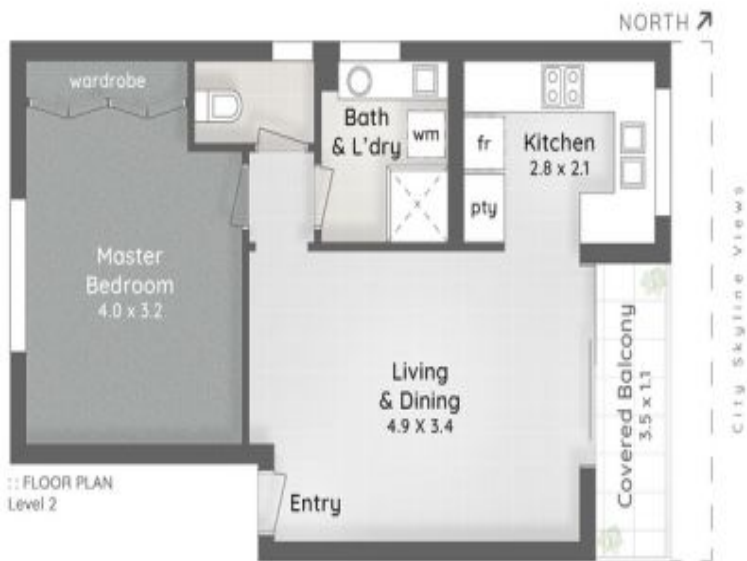
Marie Erasmus
M 0430 065 908



RE/MAX Coast



:: FLOOR PLAN
Ground Floor



:: FLOOR PLAN
Level 2

POINTS OF INTEREST

1. POLJANE LODGE
2. Ferry Road Market
3. Sundale Bridge (Connects to M1)
4. Glink Light Rail Station
5. Australia Fair Shopping Centre
6. Broadwater Parklands
7. Smith Street (Connects to M1, Griffith Uni & GC Public & Private Hospitals)



:: LOCATION MAP

POLJANE LODGE 7/25 White Street SOUTHPORT

1 Bed 1 Bath 1 Car

Internal 51m² | Covered Balcony 4m² | Total 55m² or 6 Squares
Carspace 19m²

RE/MAX
Coast

Marie Erasmus 0430 065 908

No permission is given to use or alter this floor plan without the consent of Pure Design Concepts. The overall presentation style, layout, imagery, fonts, background, colours and terminology has been originally created by PDC and is subject to strict copyright. No ownership is taken for building design. All measurements are approximate & individuals should rely on their own information. Find out more at puredesignconcepts.com.au

puredesign plans for purpose