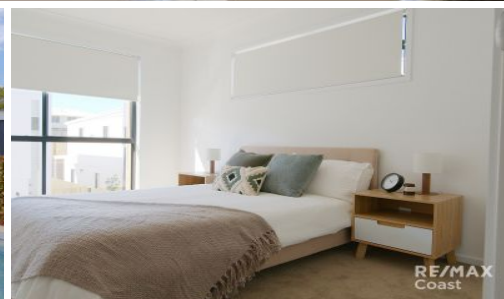
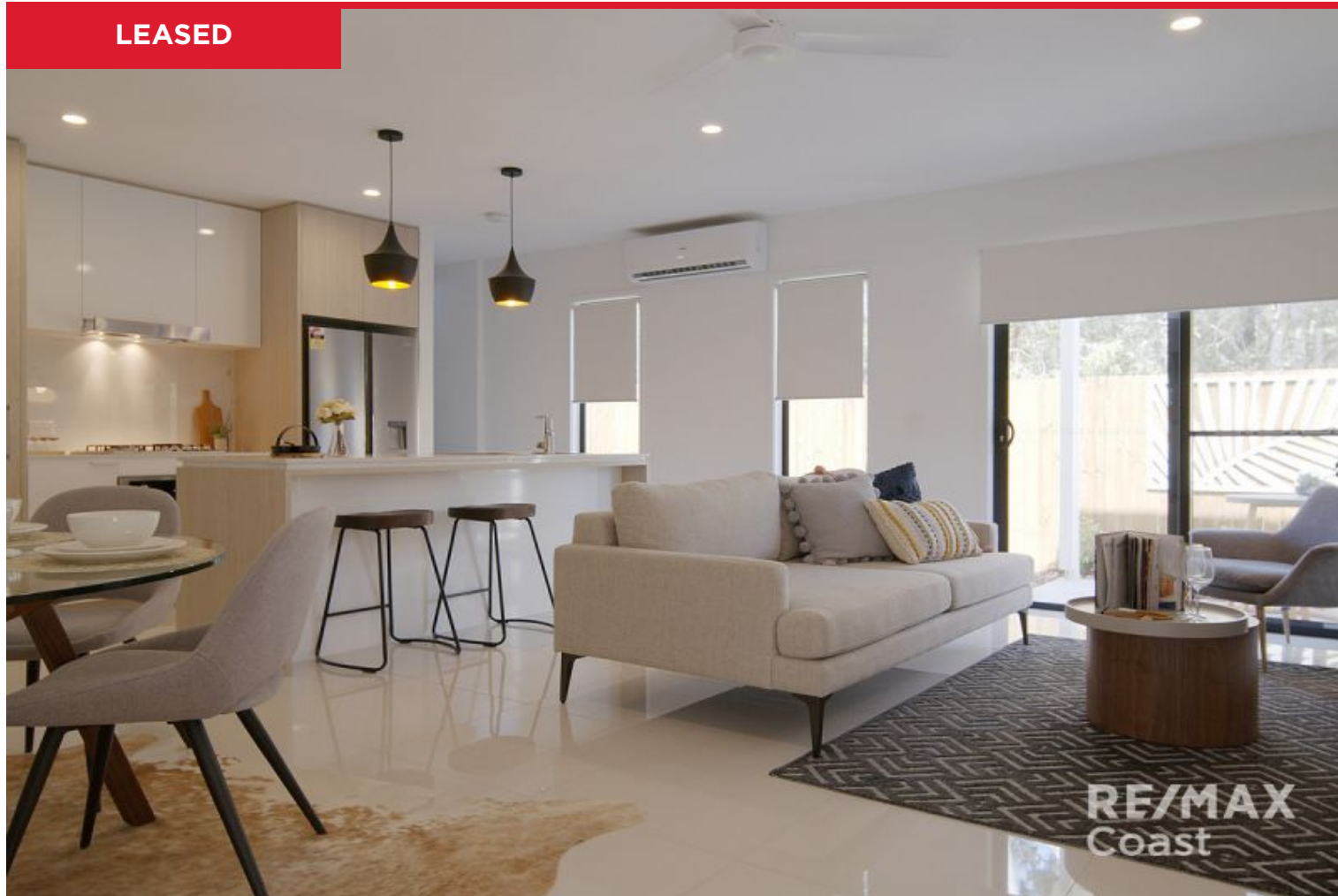


LEASED


64/7 Angela Way, Pimpama

Refined, modern and sophisticated, Gawthorn Terraces is a new boutique complex offering comfort, design and space all within a stones throw to shops, schools and the M1. Architecturally designed and superbly low maintenance, the rear private courtyard has artificial turf so no weekend mowing involved. Instead, spend time relaxing by the pool and BBQ area. All internal finishes are beautiful, neutral and high end.

FEATURES:

**** Unfurnished ****

- 3 Bedrooms (master has walk-in-robe) with fans
- 2.5 Bathrooms (ensuite to master, main plus lower level guest powder room)...

...

3 **2** **2**

Price: \$420 per week

View: <https://remaxcoast.com.au/5615003>

RE/MAX Coast - Rentals
M 0407572235



RE/MAX Coast



3 Bedroom Townhome

3  2.5  2 

64/7 Angela Way Pimpama

RE/MAX
Coast